

## LFP25.6-100

Lithium iron phosphate battery



## LITHIUM SERIES

### Characteristics

Electrical		
Nominal voltage	25.6V	
Nominal capacity at 5 hours rate (25°C)	100Ah	
Energy	2560Wh	
Charge Efficiency at 0.2C (25°C)	99.5%	
Discharge Efficiency at 1C (25°C)	96-99%	
Approx. internal resistance (25°C)	≤200 mΩ	
Cycle life / 0.2C 100% D.O.D	>3000 cycles	
Capacity affected by temperature	40°C	101%
	25°C	100%
	0°C	90%
	-10°C	75%
Mechanical		
Dimensions	Length	483±2mm (19.09inch)
	Width	170±2mm (6.77inch)
	Height	240±2mm (9.45inch)
	Total height	240±2mm (9.45inch)
Terminal type	T16	
Torque	12.3±2.5N.m	
Weight	21.5kg (47.39lbs)±4%	
Water & Dust resistance	IP65	
Battery container ABS UL94-HB	V-0 optional	
Cell strings	8 strings	
Temperature		
Nominal operating temperature	25°C±3 (77±5°F)	
Operating temperature range	Discharge	-20°C~60°C (-4°F~140°F)
	Charge	0°C~45°C (32°F~113°F)
	Storage	0°C~40°C (32°F~104°F)
Charging		
Charging voltage at 25°C	29.2V	
Standard charge mode (25°C±2°C, <75%RH)	0.2CA Constant Current to 29.2V, then Constant Voltage 29.2V until the current drops to 0.02CA. Rest 30 minutes, before use.	
Nominal charging current	20A	
Maximum charging current	50A	
Charging cut-off voltage	29.2V	
Discharging		
Continuous discharge current	100A	
Maximum pulse discharge current (<100ms)	300A	
Discharge cut-off voltage	22.4V	
Self discharge rate (25°C)	≤3%/month	
Communication & connection		
Communication protocol (optional)	RS485 (standard none)	
SOC	Bluetooth	
Maximum modules in paralel / series	4 in string / 6 in parallel	

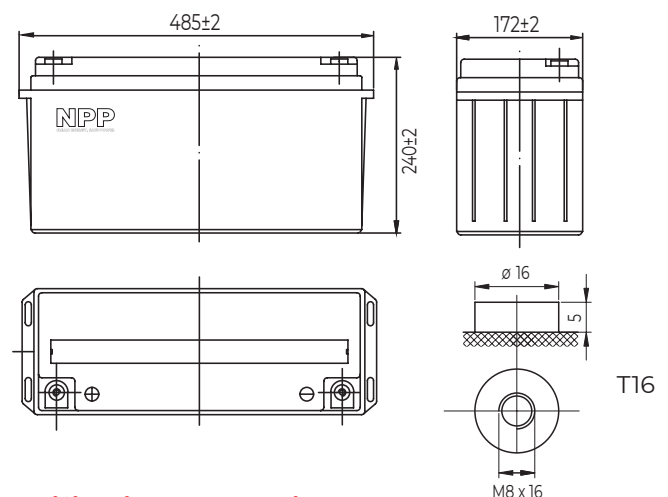
### Overview

NPP Power Lithium-Iron Phosphate batteries offer superb improvement in characteristics compared to lead-acid technology. Due to the extreme cycle and calendar life, LiFePO<sub>4</sub> batteries are an excellent long-term investment for your applications. Powerful, lightweight, safe, and smart, the Lithium-Iron Phosphate batteries are the future of the energy storage you can have right now.

### Features

- Longer cycle life** - Up to 15 times longer cycle life and 5 times longer float/calendar life than lead-acid batteries.
- More capacity** - Provides up to 100% of usable energy.
- Lightweight** - 60% lighter than lead-acid batteries.
- High discharge rate** - Ability to fully discharge the battery at a high rate of discharge.
- Fast charging** - Charges much faster than conventional sealed lead-acid batteries.
- Long cycle life** - More than 3000 cycles at 100% depth of discharge.
- Intelligent BMS** - The battery management system monitors and adapts to battery conditions to maximize performance and safety.

### Dimensions & Terminal Type (mm)



### Certification & Compliances



Compliant to: IEC 62133-2

The data in this document is subject to change without notice and become contractual only after written confirmation. Please contact NPP Power for the latest available version.

#### Guangdong NPP New Energy Co., Ltd.

No.3 Hongli Road, Miaobian Community, Liaobu Town, Dongguan, Guangdong Province, China.

#### Guangzhou NPP Power Co., Ltd.

No.67 Lianglong Road, Huashan Town, Huadu District, Guangzhou, China.  
Email: info@nppower.com.cn Tel: +86 20 37887 390

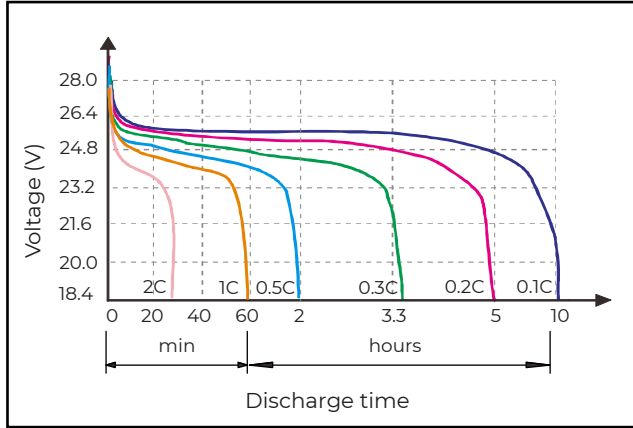
# LFP25.6-100

Lithium iron phosphate battery

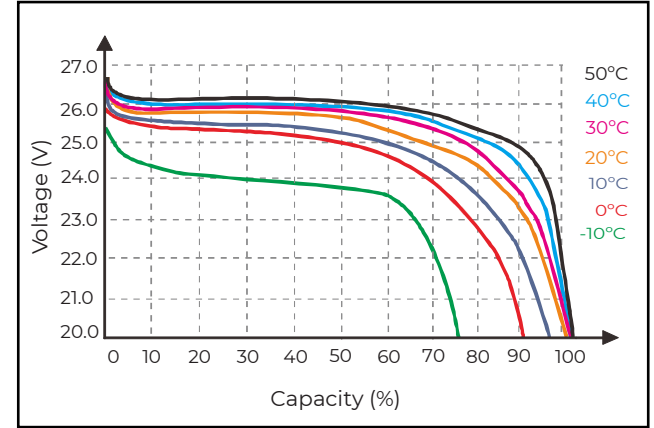
# LITHIUM

SERIES

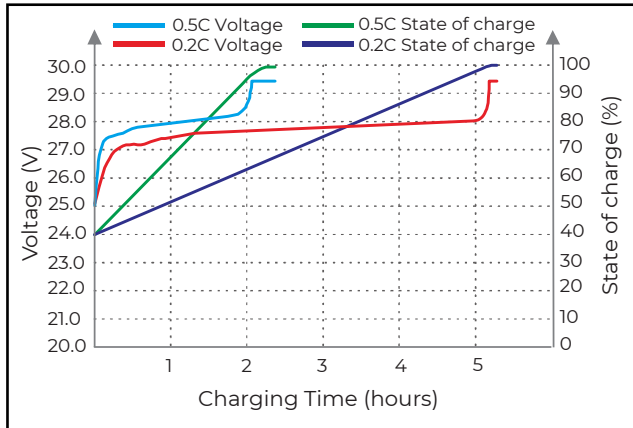
## Discharge characteristics (25°C)



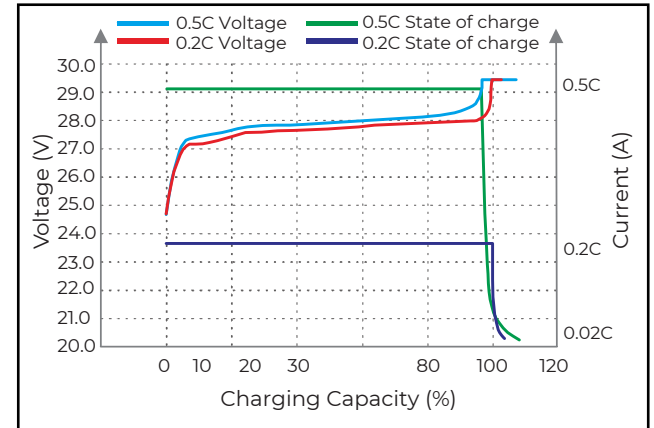
## Temperature effects on discharge (0.5C)



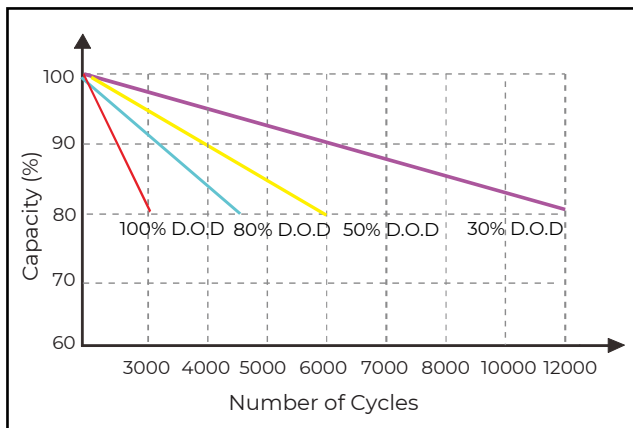
## Charging Time on S.O.C. (25°C)



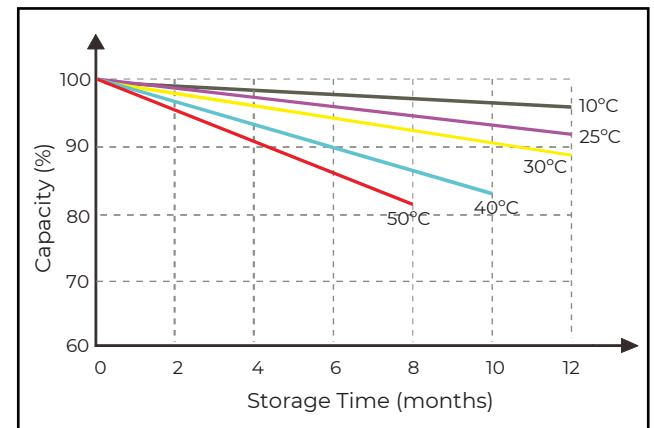
## Charge characteristics (25°C)



## Cycle life on D.O.D. (25°C)



## Self discharge characteristics



D.O.D. - depth of discharge  
S.O.C. - state of charge